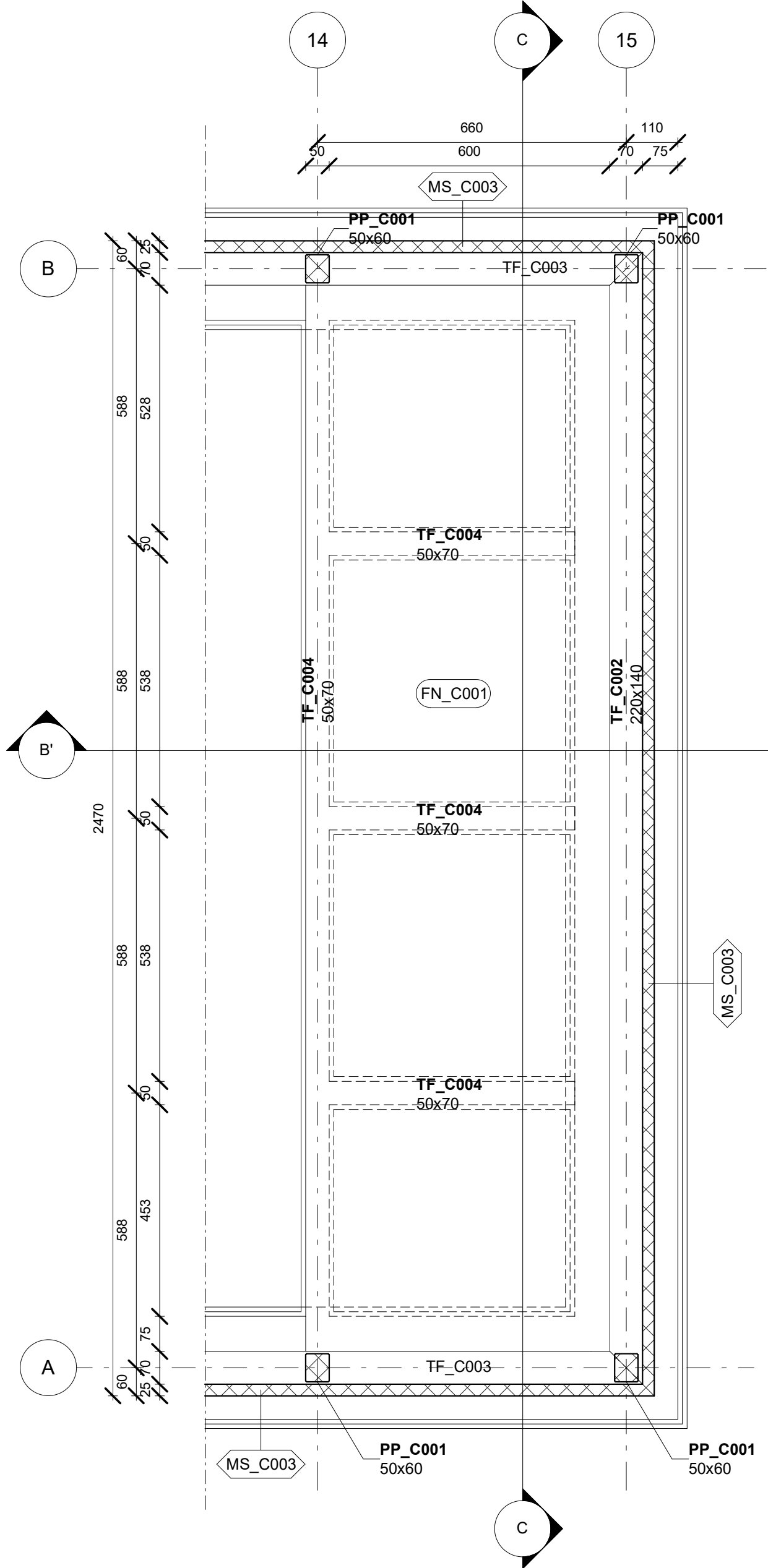
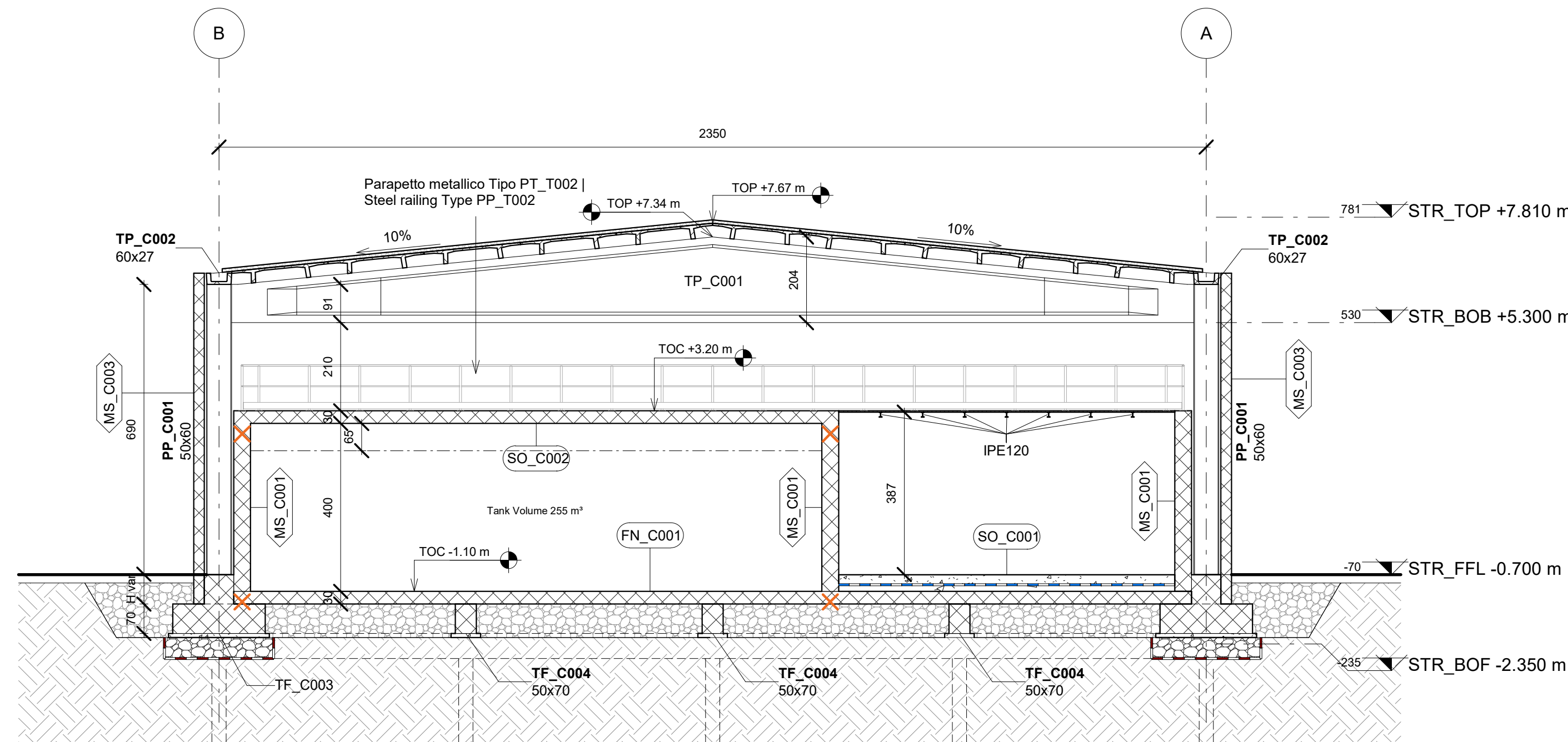


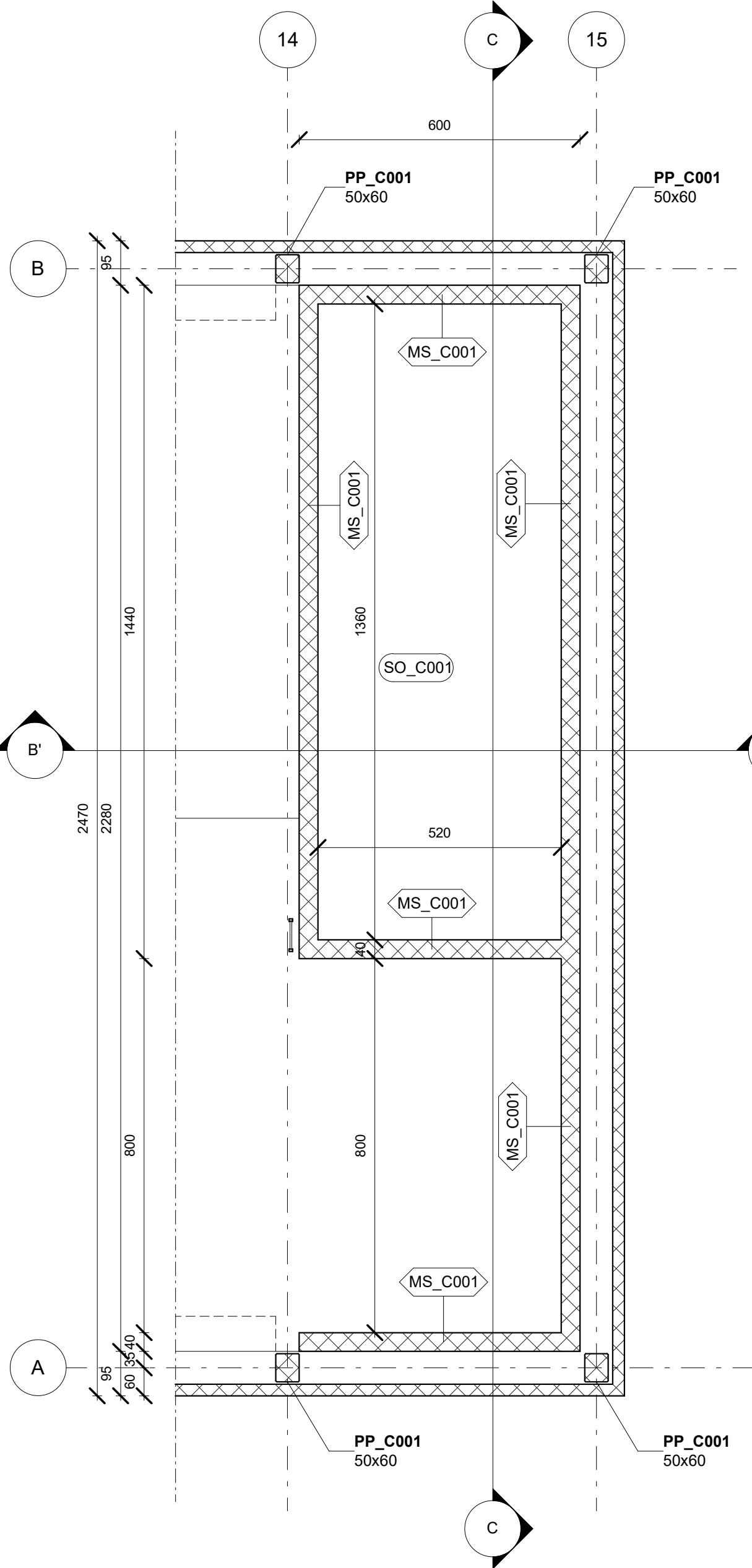
STR\_BOF -2,350 m  
1:100



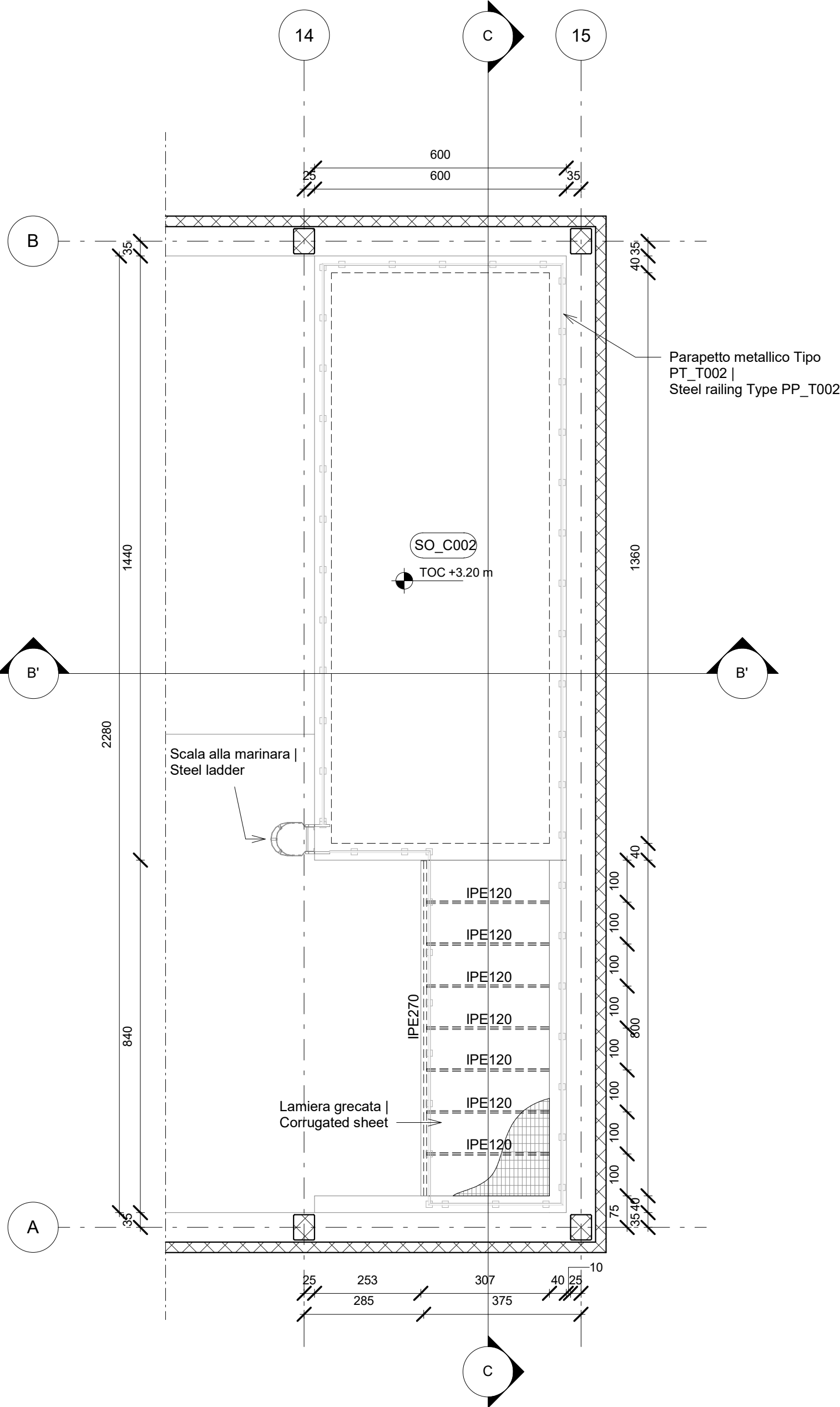
SECTION C-C  
1:100



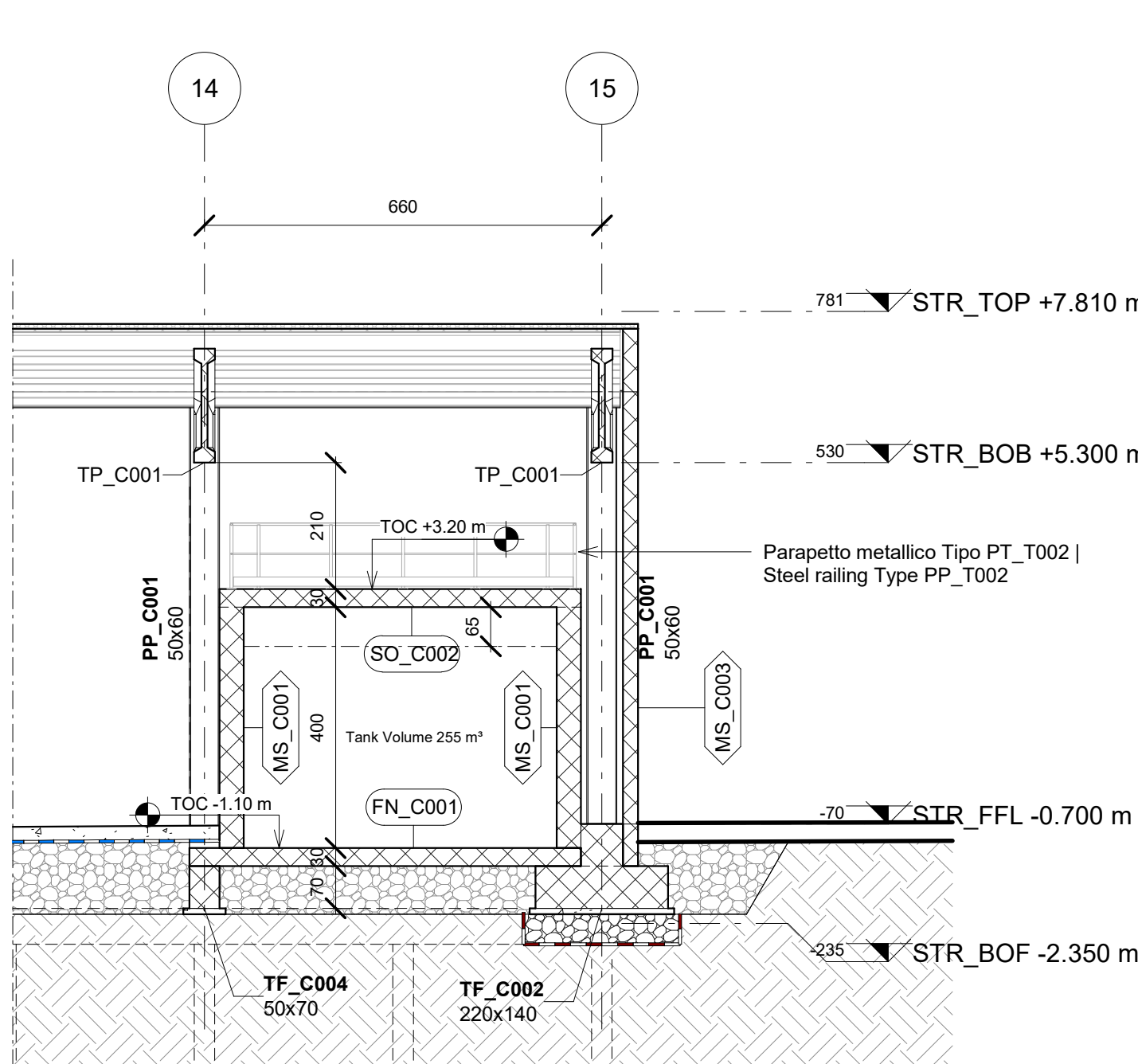
STR\_FFL +0,000 m  
1:100



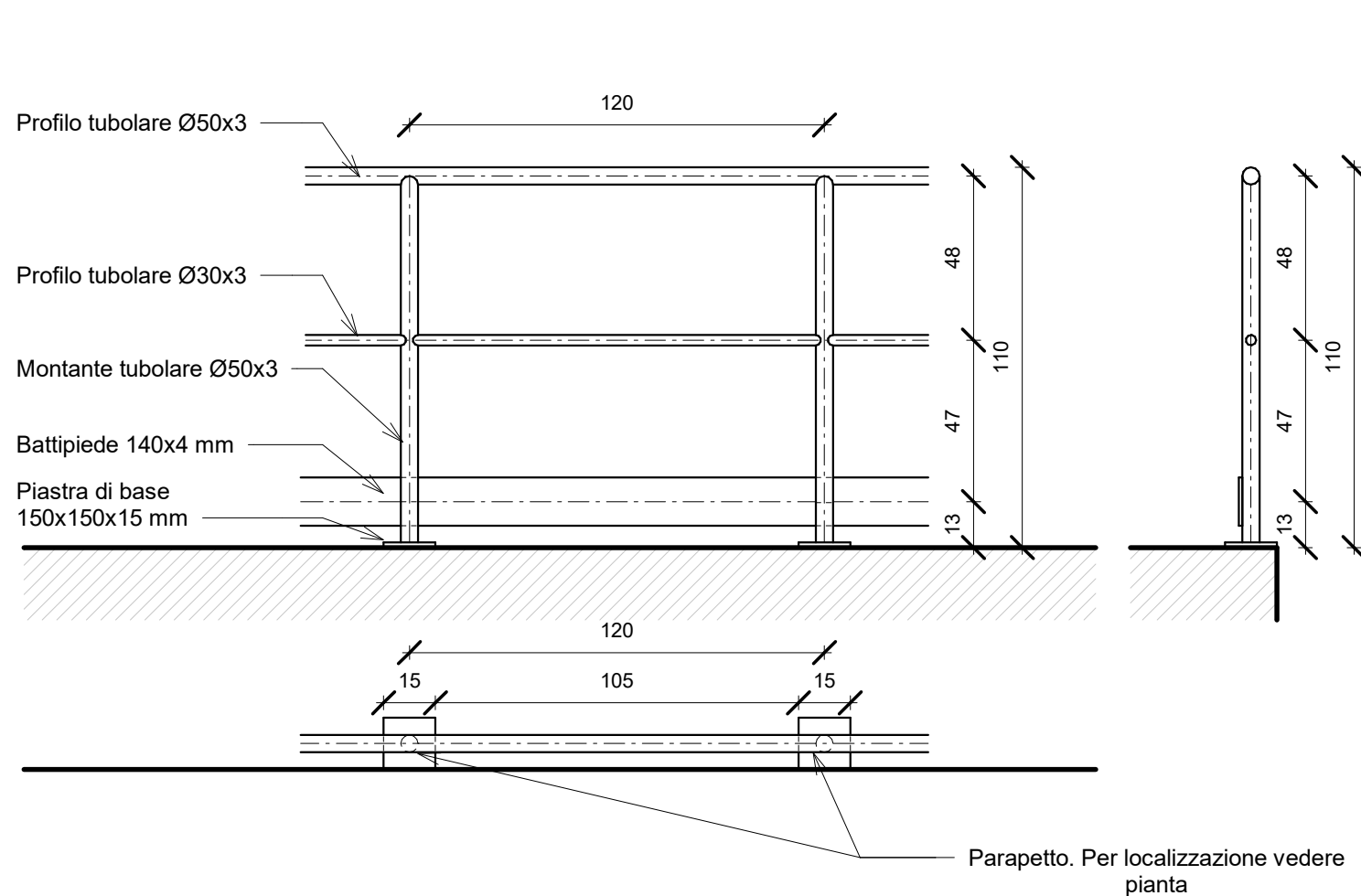
STR\_TOC +6.000 m  
1:100



SECTION B'-B'  
1:100



TYPICAL DETAIL OF PT\_T002  
1:20



INCIDENZE ARMATURE			
TIPO CARPENTERIA	INCIDENZA ARMATURA	VOLUME	PESO ARMATURA
MURI STRUTTURALI			
MS_C001	80.00 kg/m³	86.80 m³	6944.00 kg
PLATEE DI FONDAZIONE			
FN_C001	80.00 kg/m³	44.46 m³	3556.80 kg
SOLAI STRUTTURALI			
SO_C002	100.00 kg/m³	25.92 m³	2592.00 kg
TRAVI DI FONDAZIONE			
TF_C004	80.00 kg/m³	12.97 m³	1037.40 kg

#### NOTE | NOTES

- Per formetrie vedere elaborati architettonici e impiantistici | For openings see Civil and mechanical drawings
- Per pali di fondazione vedere tavola specifica | For foundation piles see specific drawings

TIPOLOGICI / TYPE	
TAG	DESCRIZIONE / DESCRIPTION
GRIGLIATI METALLICI	
GR_C001	GRIGLIATO METALLICO ANTITACCO 30x3 cm   LOCKED GRATIN PANELS 30x3 cm
MURI STRUTTURALI	
MS_C001	MURO in CA SP. 40 cm   CONCRETE WALL THK. 40 cm
PLATEE DI FONDAZIONE	
FN_C001	PLATEA DI FONDAZIONE RETTANGOLARE SP. 35 cm   FOUNDATION SLAB THK. 35 cm
SOLAI STRUTTURALI	
SO_C002	SOLETTA IN CA Sp. 30 cm   CONCRETE SLAB THK. 30 cm
TRAVI DI FONDAZIONE	
TF_C004	TRAVE DI FONDAZIONE RETTANGOLARE 50x70 cm   RECTANGULAR FOUNDATION BEAM 50x70 cm

NOTE GENERALI / GENERAL NOTES	
1.	La quota relativa <b>+0.00</b> corrisponde alla quota assoluta <b>+61.800</b> m.s.l.m   The relative elevation +0.00 corresponds to the absolute elevation +61.800 m a.s.l.;
2.	Le quote altimetriche sono espresse in metri   Altimetric elevations are expressed in meters;
3.	Tutte le misure sono espresse in cm salvo ove espressamente indicato   All measurements are expressed in cm unless otherwise specified;
4.	Per <b>NOTE E SIMBOLI</b> fare riferimento all'elaborato <b>SAR-STR-T-001</b>   For <b>NOTES AND SYMBOLS</b> , refer to drawing <b>SAR-STR-T-001</b> ;
5.	Per la <b>TABELLA MATERIALI</b> fare riferimento all'elaborato <b>SAR-STR-T-002</b>   For the <b>MATERIAL TABLE</b> , refer to drawing <b>SAR-STR-T-002</b> ;
6.	Per dettagli Waterstop vedere elaborato <b>SAR-STR-T-009</b>   For Waterstop details refer to <b>SAR-STR-T-009</b>
7.	Per dettagli di trattamento sottofondazione vedere elaborati <b>SAR-STR-T-004</b> e <b>SAR-STR-T-020</b>   For soil replacement and details see <b>SAR-STR-T-004</b> e <b>SAR-STR-T-020</b> .

Nr.	Date	Review Description	Reviewed by
02	12/05/2025	PRELIMINARY DESING - SECOND ISSUE	AS
01	30/04/2025	PRELIMINARY DESING - ISSUE FOR BIDDING	AS

Phase		PRELIMINARY DESIGN	
Subject		SARMATO (PC)	
		Plant for the production of biomethane from agricultural by-products and zootechnical waste Impianto per la produzione di biometano da sottoprodotti agricoli e reflui zootecnici	
Client		Designer	
APIS PV1 società agricola srl Via Gianni Brida 4 391000 Bolzano (BZ) P.IVA IT03171440211		KELSE Engineering srl Corso Galileo Ferraris 70 10129 Torino (TO)	
Planner			
VORN Bionergy Italia srl Via Alessandro Volta 13/a 391000 Bolzano (BZ) P.IVA IT03025520218			
Nr. Drawing		Description	
SAR-STR-T-013		Vasca di separazione digestato (20) - Carpenterie e sezioni / Digestate separation station (20) - Formworks and Sections	
Designer	Controlled	Scale	Date
KELSE	AS	Come indicato	12/05/2025
Revision			
02			